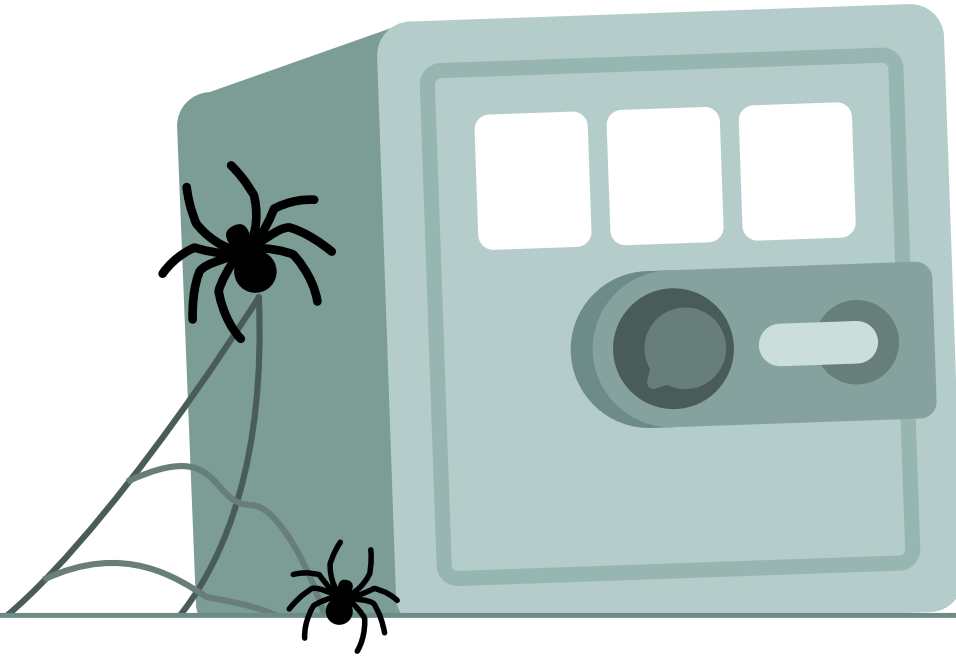


# ESCAPE ROOM

HALLOWEEN SPECIAL

## CHALLENGE #1

Find the right combination to open the safe.  
The combination has 3 different digits.



Here are the clues:

One of the digits is correct and is in the right position.

None of the digits is correct.

One digit is correct but is not in the right position.

Two digits are correct but are not in the right position.

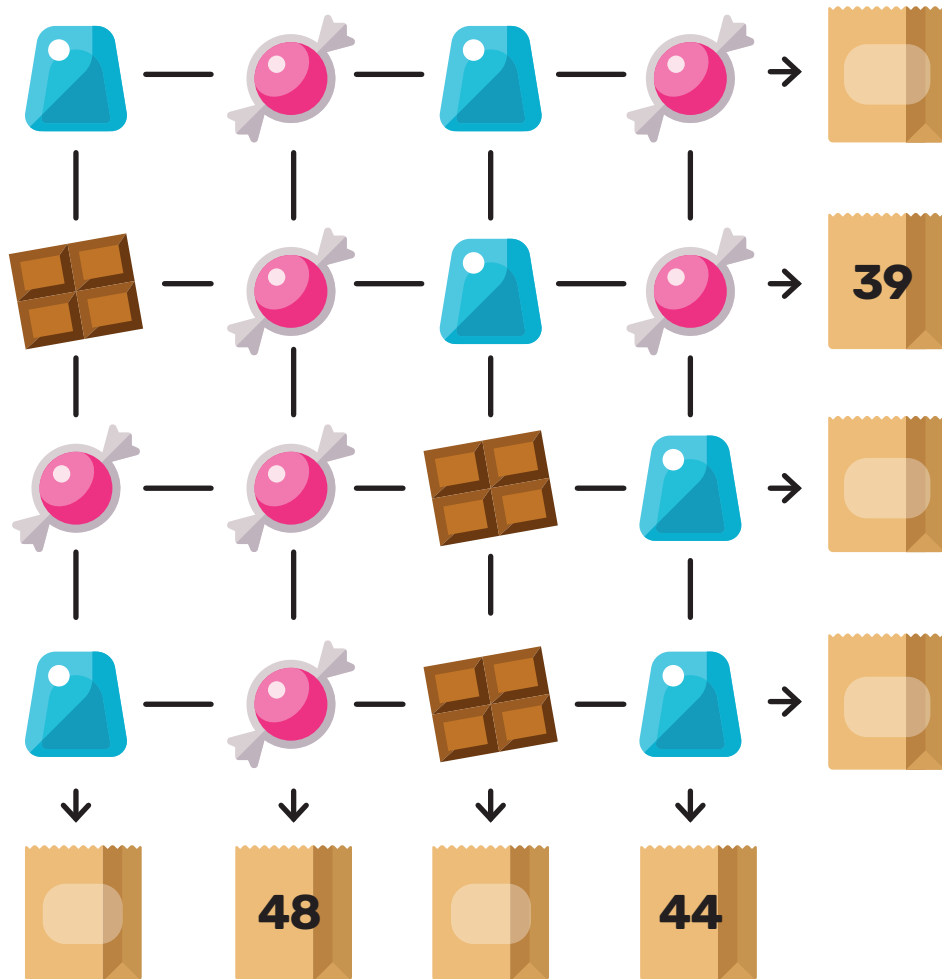


# ESCAPE ROOM

## HALLOWEEN SPECIAL

### CHALLENGE #2

Each type of candy represents a number.  
 The sum of these numbers is indicated at the end of one of the rows and at the end of two of the columns. Using this information, find the missing sums.





# ESCAPE ROOM

HALLOWEEN SPECIAL

## CHALLENGE #4

Complete the grid with the numbers 1 to 9.  
The sum of each row and each column is indicated at the end.  
All of the numbers from 1 to 9 must be used, but can only be used once.

5			16
	6		15
		3	14
20	19	6	

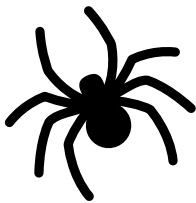
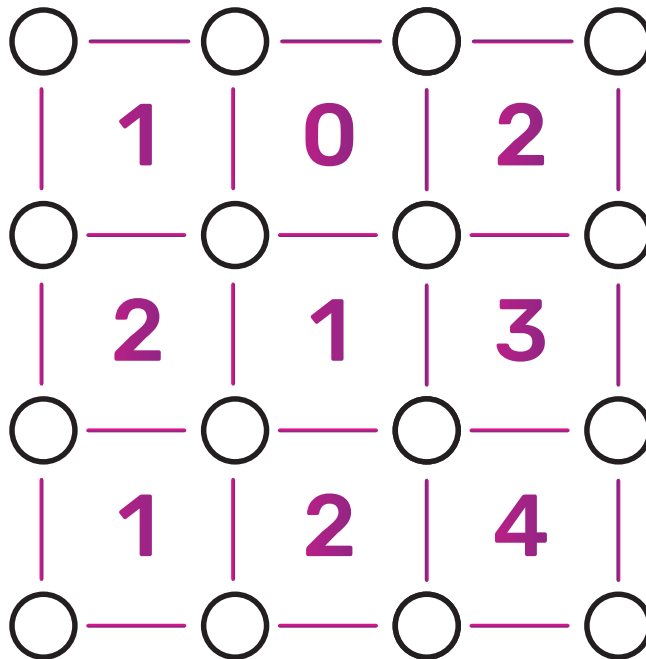
# ESCAPE ROOM

HALLOWEEN SPECIAL

## CHALLENGE #5



There is a digit in each box (0, 1, 2, 3 or 4). This digit indicates the number of circles at the four corners of the box that must be coloured in. Find the circles and colour them in.



# ESCAPE ROOM

## HALLOWEEN SPECIAL

### CHALLENGE #6

You have 4 numbers. Try to find the target number by carrying out the operations on the numbers provided.

🦋 You do not have to use all the numbers. But you cannot use a number more than once.

🦋 You can choose any of the 4 operations (+, -, x, ÷). You can use any operation more than once if you want.



3

4

5

9